

Great
Place
To
Work®

Certified

DEC 2022 – DEC 2023

INDIA™

SKIPPER
Limited



TAKING POWER PLACES

TRANSMISSION TOWERS

- » Angles
- » Fasteners
- » Accessories
- » EPC Line Construction
- » Tower Load Testing



**Skipper Ltd. is a
300 million USD**

company and the
flagship entity of
the S K Bansal Group

Among the **largest tower
manufacturers**
in the **world**

From being a leading tower
manufacturer, we have
evolved our value chain
to produce fasteners, bolts, nuts and
other accessories and integrated forward
to also emerge as a successful EPC player
in the tower business.

The leading manufacturer of
transmission towers,
MS & HT Angles, bolts,
nuts and accessories
among an exhaustive product basket



**In- House Testing Station
& R&D Center,**

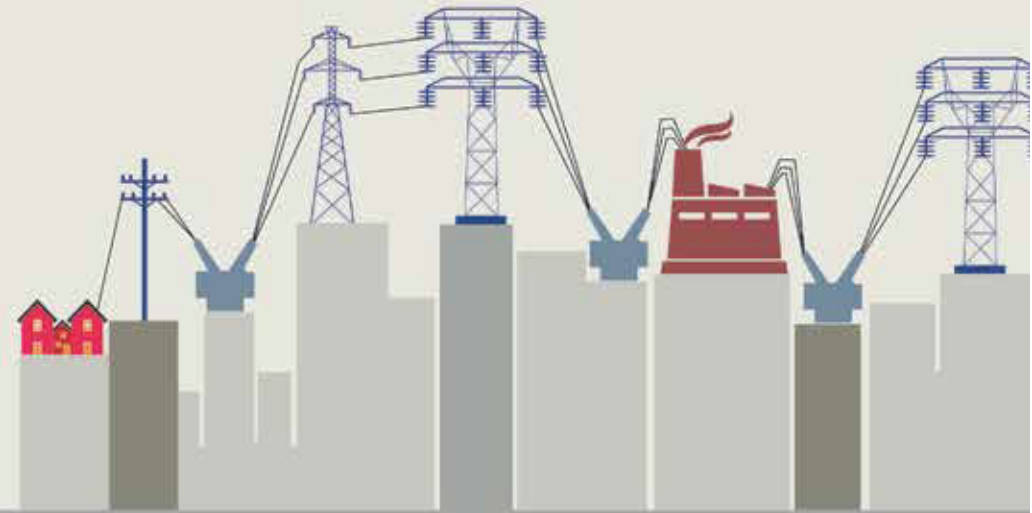
accredited by National Accreditation Board for Testing and
Calibration Laboratories (NABL)

approved by Dept. of Scientific and
Industrial Research (DSIR), Govt. of India

Complete integrated
**transmission
solutions provider**



Power-house!



Our status:

Skipper Limited is the largest tower manufacturer in India and also among the top 10 in the world. The company exports to more than 60+ countries across the globe.



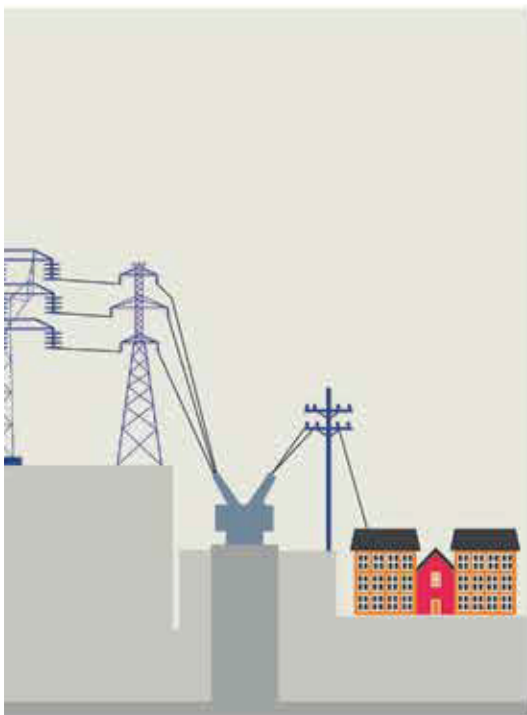
Our background:

Skipper (established in 1981) is a flagship company of the S.K. Bansal Group. It has over 42+ years of experience in manufacturing various value-added Steel products such as Telecom Towers, Hamilton Poles, Tubular Poles, ERW Tubes and Scaffoldings.

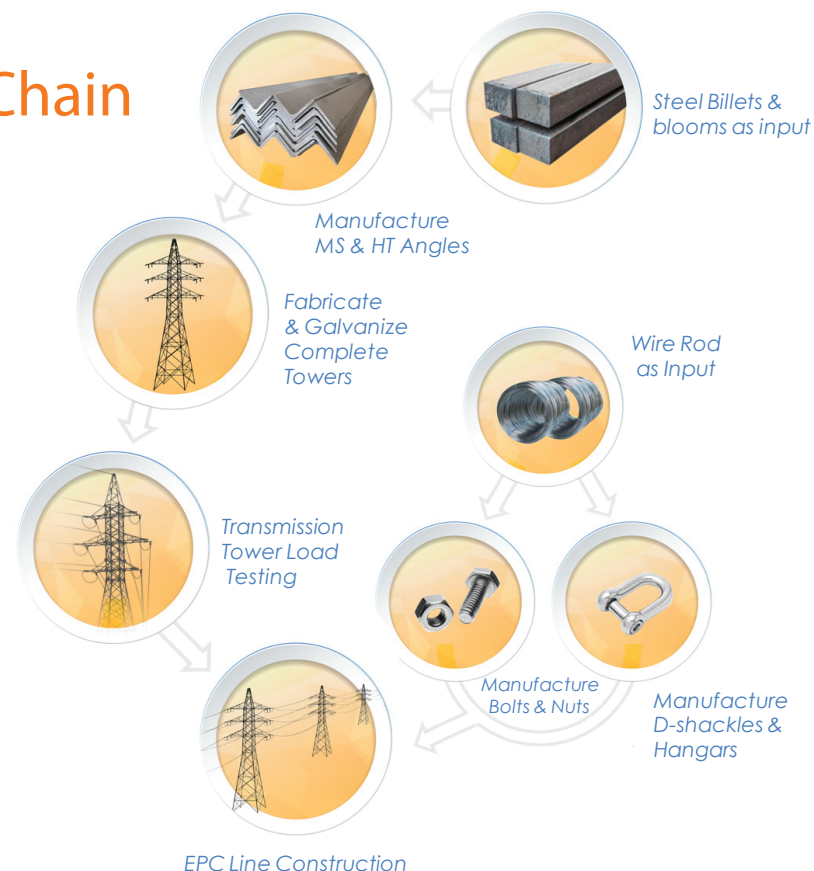


Our quality:

Skipper's commitment towards product quality has made it the manufacturing partner of choice to the Powergrid - world's largest transmission utility and also Ramboll - world's largest tower design company (ISO 9001 certified)



Our Value - Chain



Consider us.

Do you prefer a multi-faceted, versatile and energetic company or one that prefers less of action?



Our plants:

Skipper has state-of-the-art Engineering, Fabrication and Galvanizing facilities in-house, within the Company's 3 Powergrid approved plants - 1 in Uluberia, 2 in Junglepore (West Bengal).



Our EPC business:

A dedicated vertical for (EPC) services has been established with specialized skill set to execute turnkey projects in the towers' domestic market.



Our health and safety measures:

Health and safety is one of the priority areas at Skipper. We are ISO 14001:2015 & ISO 45001:2018 certified.



Our In-house Tower Load Testing Station

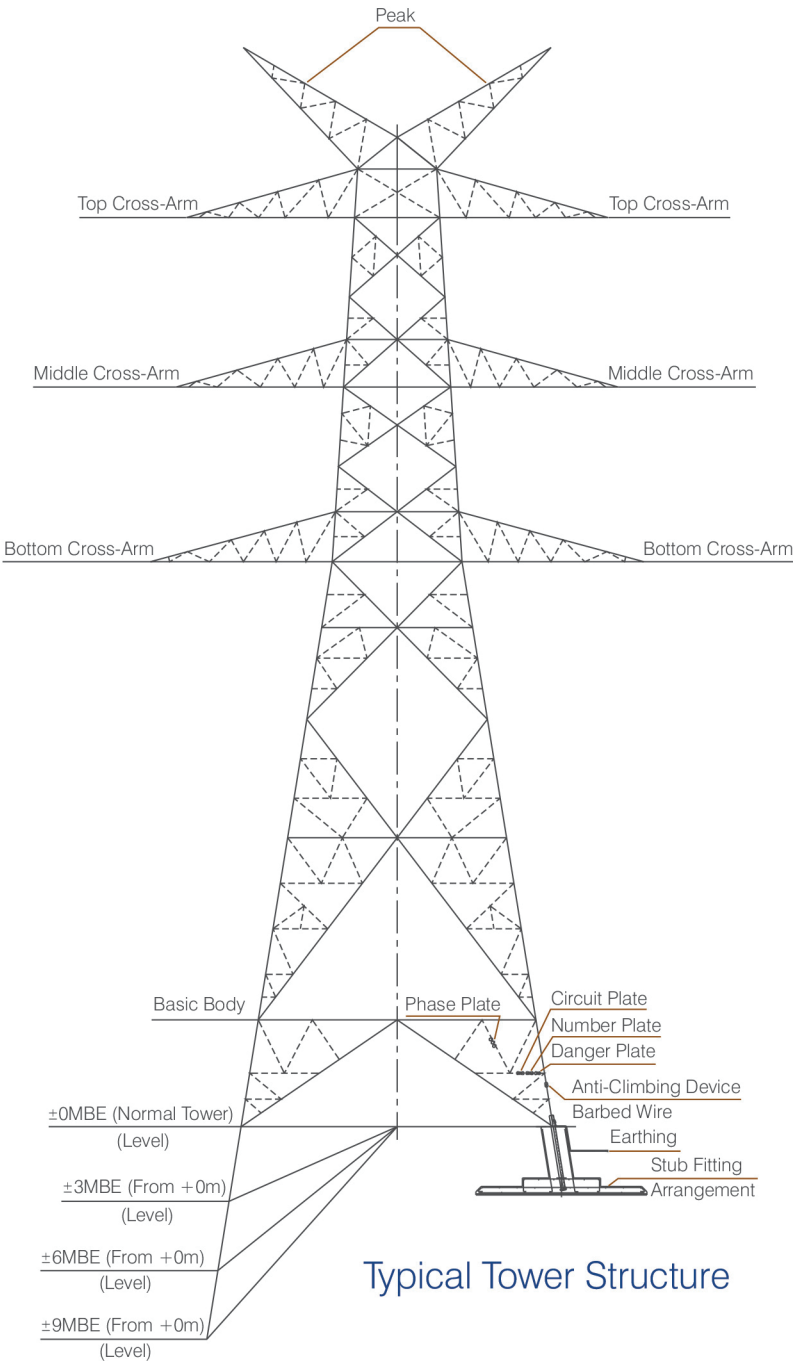
Skipper has one of the world's largest Tower & Monopole testing Station. The facility is designed to test all kinds designed to test all kinds of lattice towers, monopoles & guyed towers with world class technical parameters.

Power-packed!

Would you rather join hands with a company that is credited for being singularly pioneering or those that are run-of-the-mill?

Consider us.

At Skipper Limited, transmission towers are viewed not just as a product, but as a service. From designing and manufacturing of each component and prototyping and tower load testing to the erection and stringing of a customised tower, Skipper is present along the entire value chain.



Typical Tower Structure

Did you know?

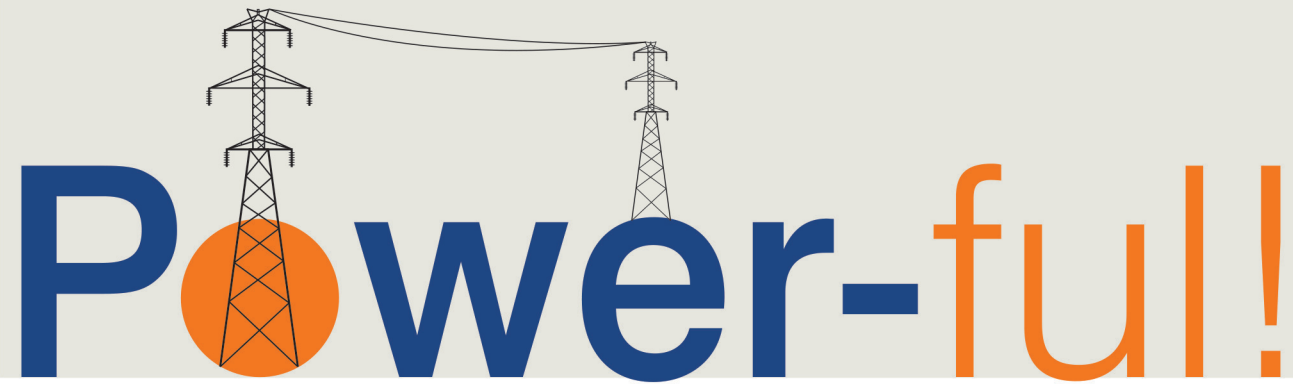
Within each transmission line, there are 15-20 structures including basic bodies, extensions and stubbs.



Each structure can have upto 800 unique parts, all of which are produced, assembled for proto checking and packed perfectly before shipping from Skipper.

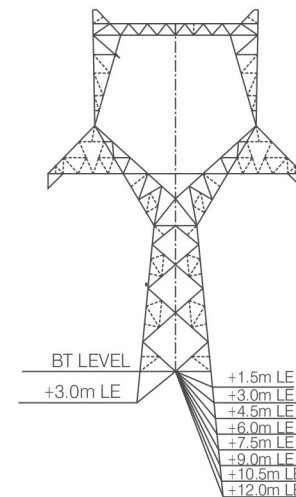


400kV DC Twin TL - Panchkula - Patiala

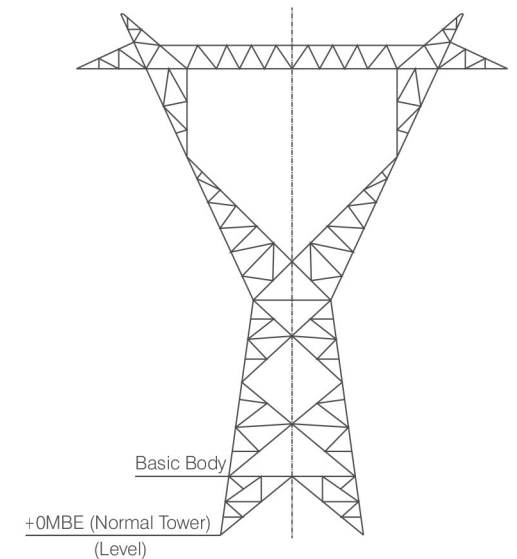


Range of towers:

Do you prefer a company that is highly specialized in its response to each and every order/ customer, or a company that treats all orders in a similar vein?



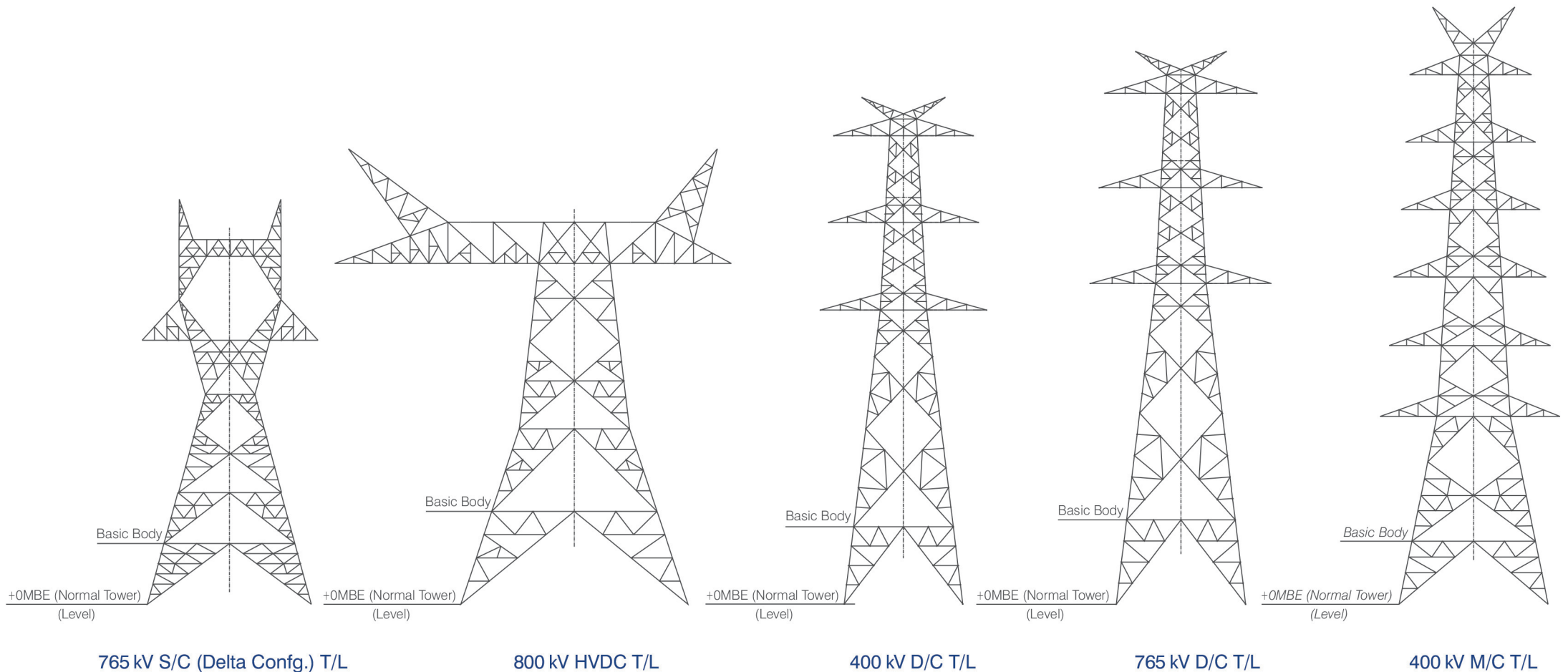
500 kV S/C TOWER



765 kV S/C (Hor. Config.) T/L

Consider us.

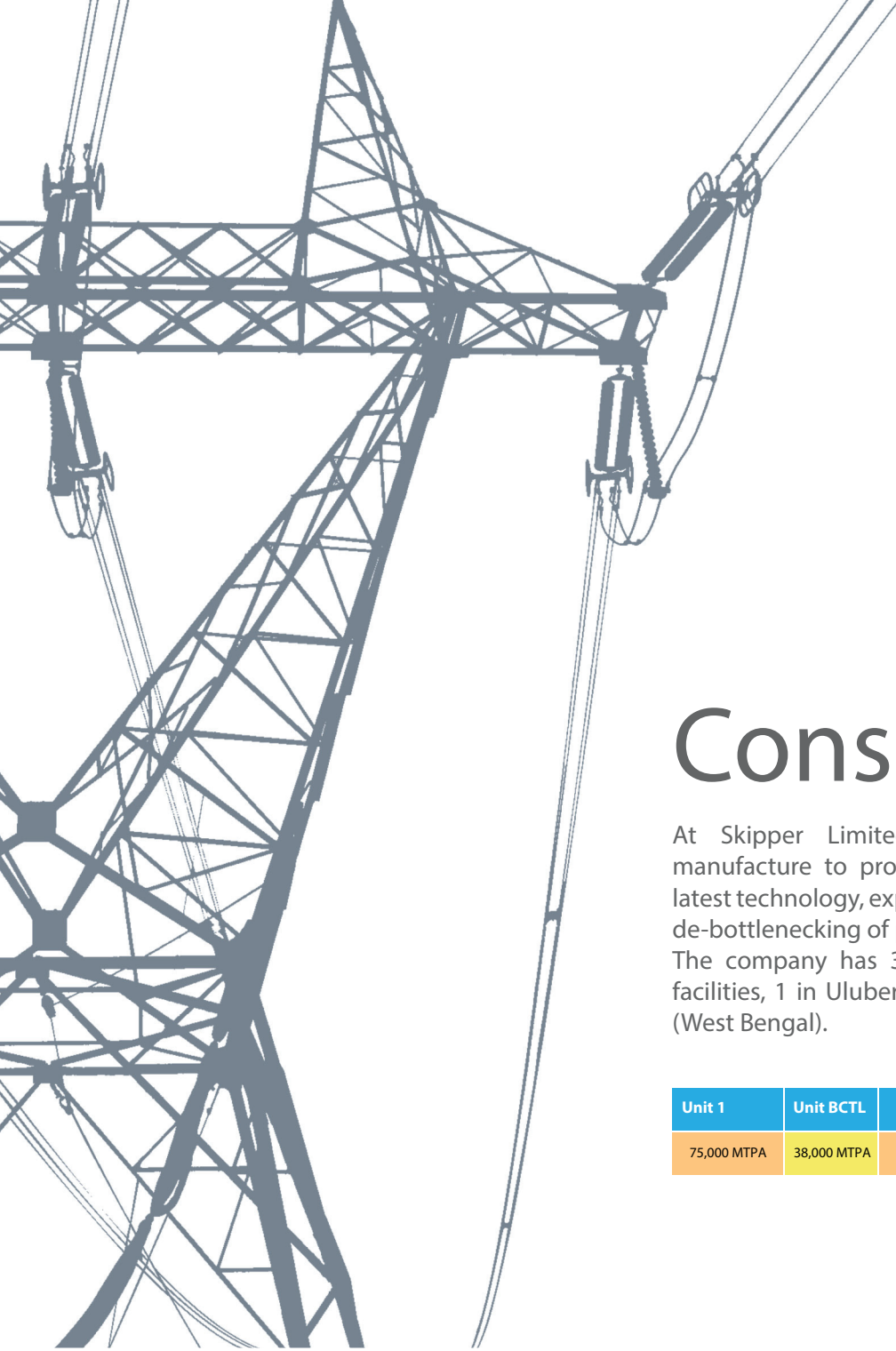
At Skipper Limited, we offer our customers a full-range-cum-diverse product basket ranging from 66kV to 800kV Towers (Single Circuit, Double Circuit, Multi-Circuit Towers suitable for Twin, Quad and Hex Conductor configurations). Some typical tower configurations produced at Skipper are shown below:





Em-powered!

Would you rather select a company that is
engaged in critical manufacture of its products
or one that manufactures without thought?



Facility highlights at Skipper

- » Owns 3 Powergrid approved manufacturing plants
- » Installed capacity of over 3,00,000 MT per annum
- » 7 in-house galvanizing plants upto 12 m length, 2.5 m width and 3 m depth
- » 57 Angle and Plate CNC lines
- » Zero machine downtime with 4 units back-up
- » In-House Tower Load Tower Testing Station
- » Nut bolt capacity of 600 MT per month i.e. 7200 MT per year
- » In-house MS & HT Angle Rolling (upto 250 X 250 X 35) that guarantee all time availability
- » Machinery and latest technology of manufacture is imported from Italy and China
- » In-house Engineering and Drawing department to provide Optimized Design solutions for all client requirements

Consider us.

At Skipper Limited, we extend beyond mere manufacture to providing a service. Absorbing the latest technology, expansions and modernizations and de-bottlenecking of plants on an ongoing basis. The company has 3 state-of-the-art manufacturing facilities, 1 in Uluberia, 2 in Junglepore, near Kolkata (West Bengal).

Unit 1	Unit BCTL	Unit Uluberia	Total capacity per annum
75,000 MTPA	38,000 MTPA	1,87,000 MTPA	3,00,000 MTPA

Did you know?

Skipper has a much higher output almost by 15% per month than competitors.

The company has a fully automated ERP system for constant monitoring of its product batches.



Out-power!



In house Tower Load Testing Station

Would you rather partner with a company that takes care of a product from inception to delivery or one that simply produces and forgets?

Consider us.

Design and Engineering

Skipper has a state of art in-house design facility with a strong team of Design Engineers and Draughtsmen who continuously develop innovative, construction friendly and cost effective designs. The company is equipped

with the latest softwares like PLS Tower, PLS Pole Tower- Cad & Auto-CAD is equipped to provide computerized engineering solutions, 3D analysis and design. The company has also designed various type of towers ranging from 33 kv to 765

kV and various types of monopoles. Major achievements include the designing and testing of 500 kV S/C and D/C towers for South American client.

Some of our successfully designed & tested towers are -

Voltage Range	Country Name
» 230 kV S/C & D/C	Philippines
» 132 kV D/C	Nepal
» 400 kV D/C	Oman
» 132 kV M/C	Sri Lanka
» 220 kV D/C	Chile (South America)
» 132 kV D/C	Nepal

Voltage Range	Country Name
» 66 kV S/C & D/C	Chile (South America)
» 132 kV D/C	Nigeria
» 330 kV D/C	Nigeria
» 240 kV M/C	Canada
» 500 kV D/C	Malaysia
» 500 kV D/C	Philippines

Packing and Containerization

At Skipper, containerization is the manifestation of the company's ethos to care till the last mile for its valuable customers. Utmost care is taken to ensure all tower parts reach the end customer in sturdy sea-worthy packing for ease of handling during transportation from factory to installation site. All our plants are geared up to do single-tower bundling and factory-stuffing of containers for ensuring safe delivery to site.

Proper lashing, choking and fumigation are done to ensure international norms of packaging. Services of professional logistic enables best of shipping lines and fast delivery to our international customers. A dedicated fleet of transporters are engaged for transportation of towers to our domestic customers.



Global Footprints



South America

- Peru
- Brazil
- Colombia
- Chile
- Paraguay
- Panama
- Uruguay
- Bolivia
- Dominican Republic
- Burundi
- Trinidad and Tobago

Middle East

- Jordan
- Saudi Arabia
- UAE
- Qatar
- Oman
- Kuwait
- Iraq
- Bahrain

South and South East Asia

- India
- Nepal
- Bangladesh
- Sri Lanka
- Indonesia
- Philippines
- Malaysia
- Myanmar

Australia

New Zealand

Europe

- Finland

USA

Canada

Africa

- Kenya
- Egypt
- Ghana
- Nigeria
- Zambia
- Sierra Leone
- Guinea
- South Africa
- Botswana
- Burundi
- Angola
- Liberia
- Tanzania
- Togo
- Mali
- Uganda
- Senegal
- Niger
- Malawi
- Gambia
- Benin
- Cameroon
- Mozambique
- Rwanda
- Central African Republic
- Burkina Faso

Over-power!

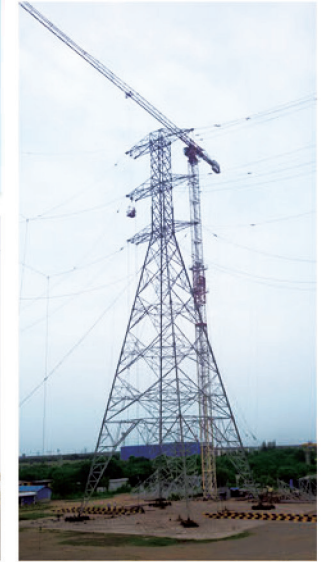
Would you prefer multiple companies to get your job done or a one-stop partner who provides you a turnkey solution?

Consider us.

At Skipper, motto is to be a leader in the Transmission Lines business and provide a one – stop solution to its brand-enhancing customers. A dedicated vertical of company has been established for EPC line construction with a specialized skill set to execute turnkey Transmission projects up to 1200 kV.



Network of service providers: The Company has a well established and strong network of service providers in India. It deploys the latest equipment to



Power-led!

Would you rather select a company that is quality-conscious by default or one that views quality control merely as an ISO mandate?



EPC
Player
Award

Awards



Award by EEPC India



Gold Award by Federation of Indian
Export Organisations(Eastern Region)



"Largest Tower Supplier" award by PGCIL in Tower supply category for 3 consecutive years.

Consider us.

At Skipper Limited, quality is a way of life. We test and certify all that we manufacture so that our customers can be completely assured in the knowledge that they are being delivered the most genuine product.

Certifications

- Bureau of Indian Standards (ISI) – ISO 9001:2015, ISO 14001:2015, ISO 45001:2018
- CE Europe
- OETC Oman
- Power Grid Corporation of India Limited (PGCIL)
- INMETRO Brazil
- Egyptian Electricity Transmission Company (EETC)
- EDL Lebanon
- Kenya Transmission Company (KETRACO)
- ACHILLES Certified
- Transmission Company of Nigeria (TCN)
- MEW Kuwait
- National Grid Corporation of Philippines (NGCP)
- MOEE Iraq
- Canadian Welding Bureau (CWB)
- RETIE, Colombia
- LAPEM Mexico

Process	Indian Standards (IS)	British Standards with European Norms (BSEN)	American Standards (ASTM)	Australian/New Zealand Standard (AS/NZS)	German & ISO Standards
Rolling & Cutting Tolerance (Hot Rolled Steel Products)	IS 1852 & IS 808	BSEN 10056-1 & 2	ASTM A6	AS/NZS 3679.1	
Fabrication	IS 802 Part-II & IS 7215	BSEN 1090-2		AS/NZS 5131	
Mild Steel (Tower Material)	IS 2062, E250A	BSEN 10025-2, S275JR/J0	ASTM A36/A36M		
High Tensile Steel (Tower Material)	IS 2062, E350A	BSEN 10025-2, S355JR/J0	ASTM A572, Gr. 50, 60 & 65		
Galvanizing	IS 2629, IS 3633, IS 4759, IS 6745	BS 729 & BSEN 1461	ASTM A123, ASTM 153 & ASTM A143	AS/NZS 4680	
Fasteners (Grades 4.6/5, 5.6/5, 5.8/5, 6.8/6, 8.8/8 & 10.9/10 Type 0, Type-1 & A325)	IS 1367 (Part-3 & 6), IS 12427, IS 14394 & IS 10238	EN ISO 898-1 & 2, EN ISO 4016, EN ISO 4018, EN ISO 4032 & EN ISO 4034	ASTM A394, ASTM F3125 ASME B 18.2.1 & B 18.2.2 ASME B 18.2.6M	AS/NZS 4291-1 & 2 AS/NZS 1559	DIN 267 Part-4 & 5 (ISO 898-1 & 2) DIN 7990, DIN 934, ISO 4032, ISO 4034

DVS ZERT CERTIFICATE

D-ZE-16083-01-00-ISO3834-2023.0240.001

DVS ZERT hereby certifies that the company



SKIPPER Limited
Unit Uluberia
NH-6, Village: Madhabpur, P.O: Mahishrekha
711 303 Uluberia, Howrah, West Bengal
India

has furnished proof to fulfil
the quality requirements for welding according to

ISO 3834-2:2021

in the extent mentioned on the reverse side.

validity: 14.06.2023 until 13.06.2026

Düsseldorf, 14.06.2023
Place and date of issue
Dipl.-Ing. (FH) Krämer
Lead Assessor

Krämer
Dipl.-Ing. Gurschke
Head of certification body

DVS ZERT GmbH, Aachener Straße 172, 40223 Düsseldorf, GERMANY



WELDING CERTIFICATE

8610-1090-2.IN00011.TÜVRh.23.00

In accordance with EN 1090-1:2009+A1:2011, table 6.1 for execution of structural steel components EN 1090-2:2018

Manufacturer

Skipper Limited

3A, Loudon Street
700017 - Kolkata
India

Manufacturing plant 1

Production facility of the manufacturer

Jalan Complex, NH-6
Village: Jangalpur
Post: Andul Mouri, Howrah-711302
West Bengal
India

Manufacturing plant 2

NH-6
Village: Madhabpur
Post: Mahishrekha, P.S: Uluberia, Howrah-711303
West Bengal
India

Technical specification

Execution class(es)

Welding Process(es)

(Reference see acc. to EN ISO 658)

Material group

Responsible welding

coordinator

Confirmation

Begin of validity

Period of validity

Place and date of issue

EN 1090-2:2018
EXC3 acc. to EN 1090-1:2009+A1:2011
135 - Metal active gas welding, partly mechanized
1.1, 1.2
according to CEN ISO/TR 15608
IN/IWE/51200519

All provisions concerning welding as described in the above mentioned technical specification(s) were applied.

24.07.2023
23.07.2024
Zabrze, 24.07.2023

Heinrich Soud
Certification Body



www.tuv.com

TÜVRheinland®
Precisely Right.



Certificate Annex

Skipper Limited

Annex 1 of 01 to Certificate number 23300-ISO-001
Containing 05 locations including Head Office

19 September 2023

ISO 9001:2015, ISO 14001:2015 & ISO
45001:2018

Scope of Registration:

Design, Manufacture, Testing, Installation and Maintenance of Galvanized Towers & its Parts, Swaged Tubular Poles, High Masts, Conical Poles, Polygonal Poles, Solar Structures and Crash Barriers.
Manufacture & Supply of Hot Rolled Steel Products such as Angles, Channels, Joists, Beams, Strips, Flats & Fasteners

HEAD OFFICE

001 **Head Office:**
3A, Loudon Street, Kolkata - 700 017, West Bengal, India

OTHER LOCATIONS

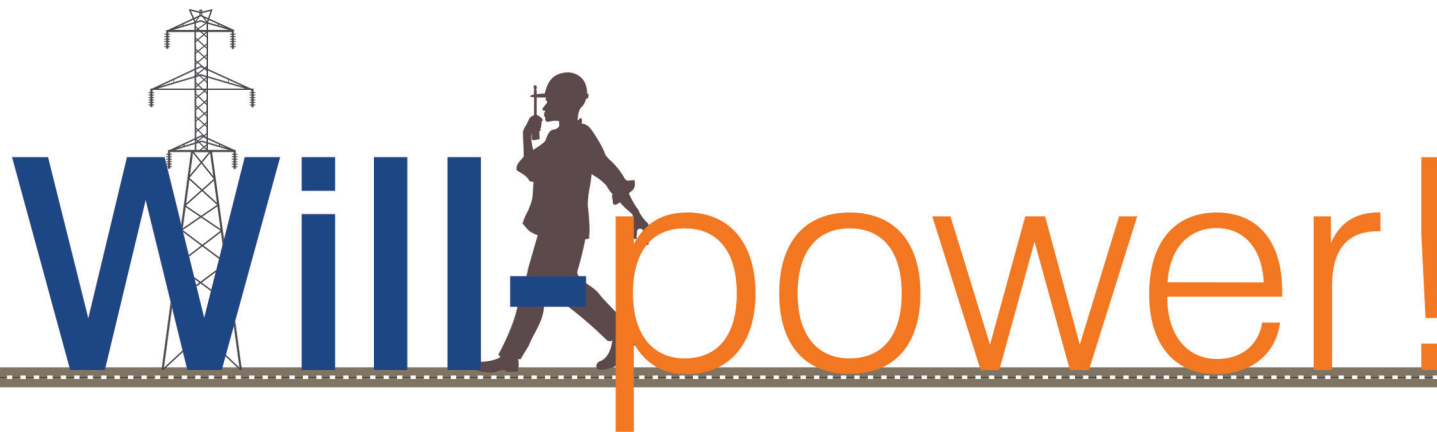
- 002 **Unit 01:**
Gate No. 1, Jalan Complex, NH6, Village: Jangalpur, Post: Andul Mouri, District: Howrah - 711 302, West Bengal, India
- 003 **BCTI Unit:**
Gate No. 1, Jalan Complex, NH6, Village: Jangalpur, Post: Andul Mouri, District: Howrah - 711 302, West Bengal, India
- 004 **Uluberia Unit:**
NH6, Village: Madhabpur, Post: Uluberia, District: Howrah - 711 303, West Bengal, India.
- 005 **Bagman Unit:**
Village & PO: Barunda, Post: Bagnan, District: Howrah - 711 303, West Bengal, India

Signed:
Alyn Franklin, Chief Executive Officer
(on behalf of Alcumus ISOQAR)

Alyn Franklin



Alcumus ISOQAR Limited, Alcumus Certification, Cobra Court, 1 Blackmore Road, Stretford, Manchester M32 0QY.
T: 0161 865 3699 F: 0161 865 3685 E: isoqar@alcumusgroup.com W: www.alcumusgroup.com/isoqar
This certificate is the property of Alcumus ISOQAR and must be returned on request.



Would you rather partner with a company which has repeatedly won the trust of every single customer or one that looks for short-term gains?

Consider us.

At Skipper Limited, we believe that the customer's project is OUR project and we are always ready to go the extra-mile to ensure we become the partner of choice to every buyer. Our customers and partner endorsements speak for themselves.



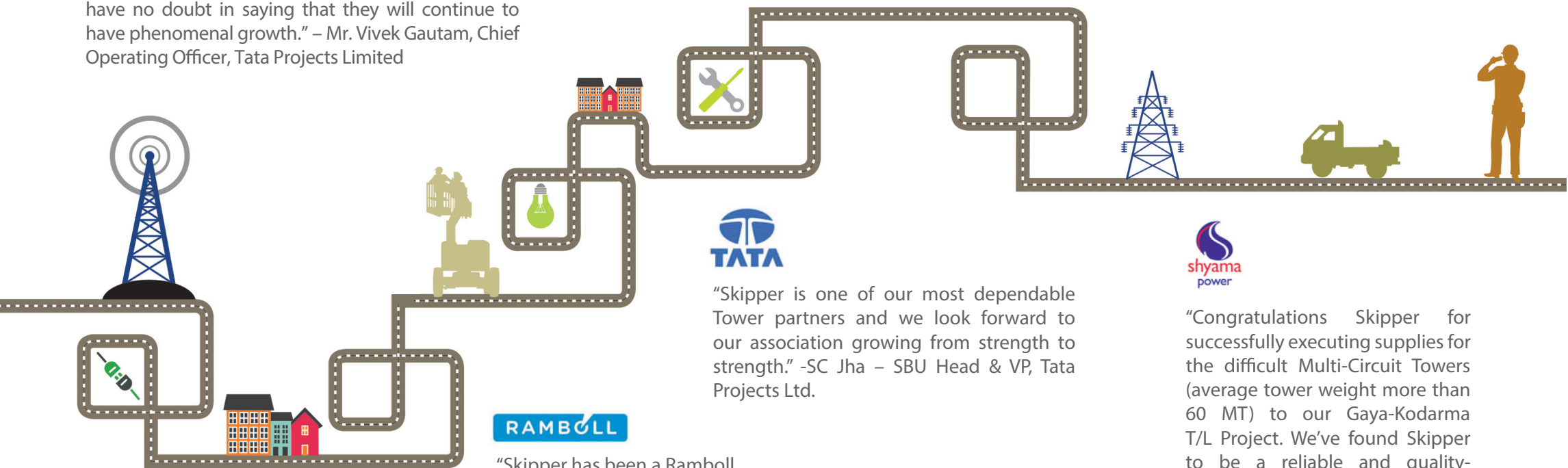
"Over the years M/s Skipper has emerged as one of the most reliable and trusted business partners in our journey of growth with excellence in T&D sector. We are a strongly bonded team today, collaborating right from bidding, winning and till successful execution of many challenging domestic and international T&D projects. With this positive and proactive approach, I have no doubt in saying that they will continue to have phenomenal growth." – Mr. Vivek Gautam, Chief Operating Officer, Tata Projects Limited



"Over the past six years, Skipper has supplied 400 kV and 765 kV Transmission Towers to 7 of EMC's transmission projects. Their quality and commitment is quite good and we wish to take them as our preferred supplier in future also." -RK Shah, President, EMC Ltd.

Ranjit Singh & Co.

"We are happy to have Skipper as a JV partner in 4 major Transmission Projects. Their product quality is excellent and their approach is highly professional and ethical." -BS Gill, Managing Partner, Ranjit Singh & Co.



"Skipper is one of our most dependable Tower partners and we look forward to our association growing from strength to strength." -SC Jha – SBU Head & VP, Tata Projects Ltd.



"Skipper has been a Ramboll manufacturing partner for more than 6 years and we have found them to be a fair and transparent Organization. We wish them all the best in their future endeavours." -Trond M. Bredesen, COO – Ramboll Towers India & Global Production Director



"Congratulations Skipper for successfully executing supplies for the difficult Multi-Circuit Towers (average tower weight more than 60 MT) to our Gaya-Kodarma T/L Project. We've found Skipper to be a reliable and quality-conscious manufacturer and look forward to working with them again." -Santosh Thakur, Director – Shyama Power India Ltd.



Man-power!

Would you rather select a company that has resident intellectual capital or one that outsources most of its research and knowledge requirements to independent consultants?



The company has three state-of-the-art PGCIL – approved plants in Junglepore and Uluberia on NH-6 Kolkata, West Bengal, India.

SAP Easy Access - User menu for BASHA SHAIK SKP& BCTL MM Purchase Us

Favorites

- ME31N - Create Purchase Requisition
- ME32N - Change Purchase Requisition
- ME33N - Display Purchase Requisition
- VMM021 - PF Data Upload
- MB1A - Goods Withdrawal
- MB1C - Other Goods Receipts
- ME53 - Display Plant Stock Availability
- MB52 - List of Warehouse Stocks on Hand
- MB58 - Stocks for Posting Date
- VMM014 - Project Ware Tracking
- MB51 - Material Doc. List
- MECA - Purchase Requisitions: List Display

User menu for BASHA SHAIK SKP& BCTL MM Purchase Us

- SUS3 - Evaluate Authorization Check
- SPR2 - Display Specification
- SP01 - Output Controller
- MB21 - Create Reservation
- FB13N - Vendor Line Items
- MB5T - Cancel Material Document
- MB1A - Goods Withdrawal
- ZWH_BOT - MM Pending indents
- MC44 - INVO: Analysis of Slow-Moving Items
- VMM023 - Stock Report View in Alternative Unit
- VMM012 - Enter Goods Issue MB1A
- VMM010 - STO Register
- ZYH03 - Purchase Register
- VMM016 - Project Ware Tracking
- VMM016 - Project Ware Tracking

Display Purchase Req. 1000001268

Document Overview On Personal Setting

10 - Germany 1000001268

Tests Release Strategy

Release group 02 SL01 and SBT

Release Strategy 01 Jangbur 1

Release Indicator RFQ/purchase order

Code Description Processor Sta

43	Plant Head Jangbur	A.X. Yalor SKPP	✓
----	--------------------	-----------------	---

Release Indicator

Item	Material	Quantity	Unit	Release Indicator
10	3000000129	2,539	KG	49
20	3000000130	34,07	KG	49
30	3000000130	8,457	KG	49
40	3000000130	1000000007	KG	49

Default Values

Item	Material	Quantity	Unit	Release Indicator
10	3000000129	2,539	KG	49
20	3000000130	34,07	KG	49
30	3000000130	8,457	KG	49
40	3000000130	1000000007	KG	49

Item

10 3000000129 - ANGLE 100010006 HT

Material Data **Quantity/Date** **Valuation** **Source of Supply** **Status** **Contact Person** **Terms** **Delivery Address** **Customer Data**

Material 3000000129 Short Text ANGLE 100010006 HT

Batch Release Level

Material Group 010 HT ANGLE

Vendor Mat. 23 PCH 012E 12 KC

1.Masters 2.B.O.M 3.Work Order 4.Planning 5.Production Process 6.Inspection 7.Dispatch Yard 8.Reports 9.Liabilities 0.Exit Window


FC163

Enabling IT as a strategic resource

Lighthouse ERP™

On Oracle Technology

Entity : Skipper Limited
A/c Year : 12-13
Logged As : BASHA SHAIK
Module in : Planning & Production
Login Since : 22-AUG-2012 14:39:23

 **Lighthouse**
Systems Pvt. Ltd.

SINCE 1987 An ISO 9001:2000 company
Plot No. 144, 1st Floor,
NAGPUR-460022 Ph-(0712) 660563, 204344,3210933
Fax (0712) 224106 Email : contact@lighthouseindia.com
www.lighthouseindia.com

1.Meters 28.0.0M 3.Work Order 4.Cutting Instruction 5.Production Process 6.Erection 7.Designated Ward 8.Reports 9.LRNRes 9 Edit Window
FT259 - Cutting Instruction Planning [COPING]

Planning Option **Result** **Summary** **Removal Details** **Stock Status** **Cutting Inst.**

Planning Options
 V. Jomco ECU - Cutting Instruction Optimized
 Markis Ad per Division* [1] TOWER DIVISION
 Project* TATA1 PMS DC RASARAH-RASUPUR (WZ-8)
 Sale Order No. D0111-00001 Total Length [11] Minimum Wt [50]
 Cut plan No* B0129-00028 Maximum Wt [150]
 Work Order No. Process Net [5] Net [5]
 Prod Code* PMA075-05 PG MS ANGLE 75x75x5 5.7
 Remark:

Stock Details
 Sine Length Qty
 1 12209 180
 2 12159 14
 3 12159 17

Get Stock
 WT 14.662

Pending Marks to cut

Slc	Mark	Top No	Length	Width	Req Pcs	Planned Pcs	Bal Pcs	Bal Net Wt
✓ 6	7.527PM0 460	W0-125-0009	3444	20	28	28	1.1274	0
✓ 7	7.527PM0 569	W0-125-0009	2492	20	28	28	3979	0
✓ 8	7.527PM0 569	W0-125-0009	2492	20	28	28	3979	0
✓ 9	7.527PM0 1203	W0-125-0009	3544	20	28	28	3456	0
✓ 10	7.527PM0 1234	W0-125-0009	3544	20	28	28	5656	0
✓ 11	7.527PM0 1267	W0-125-0009	4004	20	28	28	7955	0
✓ 12	7.527PM0 1568	W0-125-0009	4984	20	28	28	7955	0
✓ 13	7.527PM0 1568	W0-125-0009	3518	20	28	28	5617	0
✓ 14	7.527PM0 1277	W0-125-0009	3518	20	28	28	5617	0
✓ 15	7.527PM0 1591	W0-125-0009	3455	20	28	28	5513	0
✓ 16	7.527PM0 1567	W0-125-0018	5482	36	36	36	1.128	0

Selected Record [16] Selected Wt 7.8167 Total Balance Wt 7.8167

Show Details **GK** **Prngms**

Save Delete Print Select Cancel Egl

1.Masters 2.B.O.M. 3.Work Order 4.Planning 5.Production Process 6.Inspection 7.Dispatch Yard 8.Reports 9.Utilities 0.Exit 999999

FT1281 -- F.G. Inspection List

Inspection Details

Vr. Series* Insp. Date*

Project* Extra Project Inspection No

Order No* W.O. No* Section Division

Party

Consignee

Tower Type	Tower Type Name	Sub Type	Tower Sub Type Name	Str Qty	Balance	Offer Qty*
H00KV	H00KV DOUBLE CIRCUIT	POST	PD STUB	10	18	10

Markino Details

Sno	Markino*	Section	Length Width	W/Pcs	Req. Qty	Op. Qty	Net Wt	Cleared Bal	Offer Qty	Balance
D1	S0120D 2AH	PHA120-08	400	5.880	80	0	470.400	80	80	80
D2	S0120D 6H	PHA200-16	389	18.870	40	0	754.800	40	40	40
D3	S0120D 2LH	PHA120-08	550	8.090	80	0	647.200	80	80	80
D4	S0120D 2RH	PHA120-08	550	8.090	40	0	323.600	40	40	40
D5	S0120D 1DH	PHA200-24	3947	280.630	30	0	8,418.900	30	30	30
D6	S0120D 1H	PHA200-24	3947	280.630	10	0	2,806.300	10	10	10
D7	S0120D 2AH	PHA120-08	400	5.880	40	0	235.200	40	40	40

Total Htno No Qty/Str F.G. Wt/Pcs **total Wt** **Total Offer Wt**

Barcoding System

Skipper has introduced barcoding facility for tower supply for the first time in India . Our ultimate goal is to minimize the pain points of customer pertaining to material management and planning at all locations, which ensures 100% receipt of materials as delivered. Key features of barcoding system have been listed below:

Key Features:

- » Real time information sharing on materials supplied
- » Consolidated information sharing on materials supplied
- » Easy access to information pertaining to materials supplied
- » On line information sharing
- » No hardware or software requirement at site
- » Hassle free joint verification can be carried out

Benefits to customers:

- » Ensuring "Zero shortage" of materials supplied and received at site
- » Hassel free joint verification can be carried out
- » Efficient materials management (sorting, bundling and storage) at site.
- » Minimal time required as compared to physical joint verification
- » Ensuring efficient material handling and tracking from delivery to erection of towers.



Bundles barcode



Boxes barcode



Boxes barcode

Other Products

Monopole



A pioneer, Skipper Limited is the largest Monopole designing and manufacturing facility in India, armed with global expertise and intellectual capital. It has an application of upto 400 kV in Transmission Towers and for heights of up to 40 metres for Telecom Towers.

Telecom Towers



Skipper has state of the art facility for production of all types of ground based telecom towers and monopoles. With the advent of newer technologies skipper is also currently supplying various kinds of camouflaged towers which are basically monopoles made to look like palm tree, pine tree etc. We are already supplying tubular/Angular/Hybrid towers to various clients.

Poles

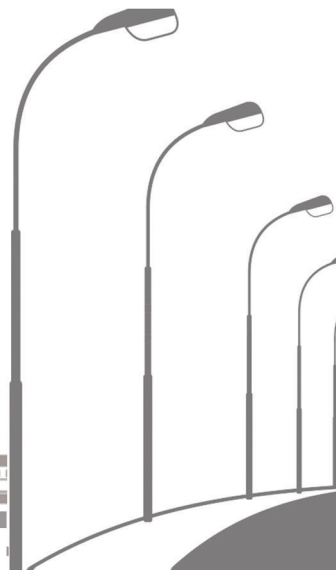
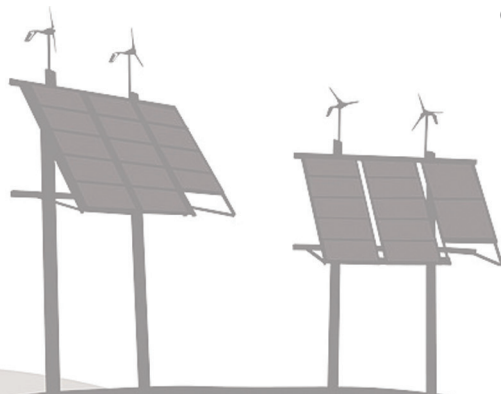


Skipper's strength as a pole manufacturer and distributor ensures that its products find use in Power Transmission, Distribution and Lighting projects across India as well as in Gulf and African countries. Products manufactured include Tubular Swaged Poles, High Mast Poles, Octagonal Poles and Monopoles. The durability and quality of Skipper poles ensure reliability, durability, and ease of installation.

Railway Electrification



The company is gearing up to sharpen its focus on Railway electrification and intends to increasingly start bidding for such projects in strategic alliance with local private players initially. The company is in the process of adding more manpower and building capacities to handle all future railways related projects.





Registered Office:

Skipper Limited 3A, Loudon Street, 1st Floor, Kolkata - 700 017, India

Ph: +91 33 2289 5731 / 32 | Fax: +91 33 2289 5733 | helpdesk@skipperlimited.com | www.skipperlimited.com